








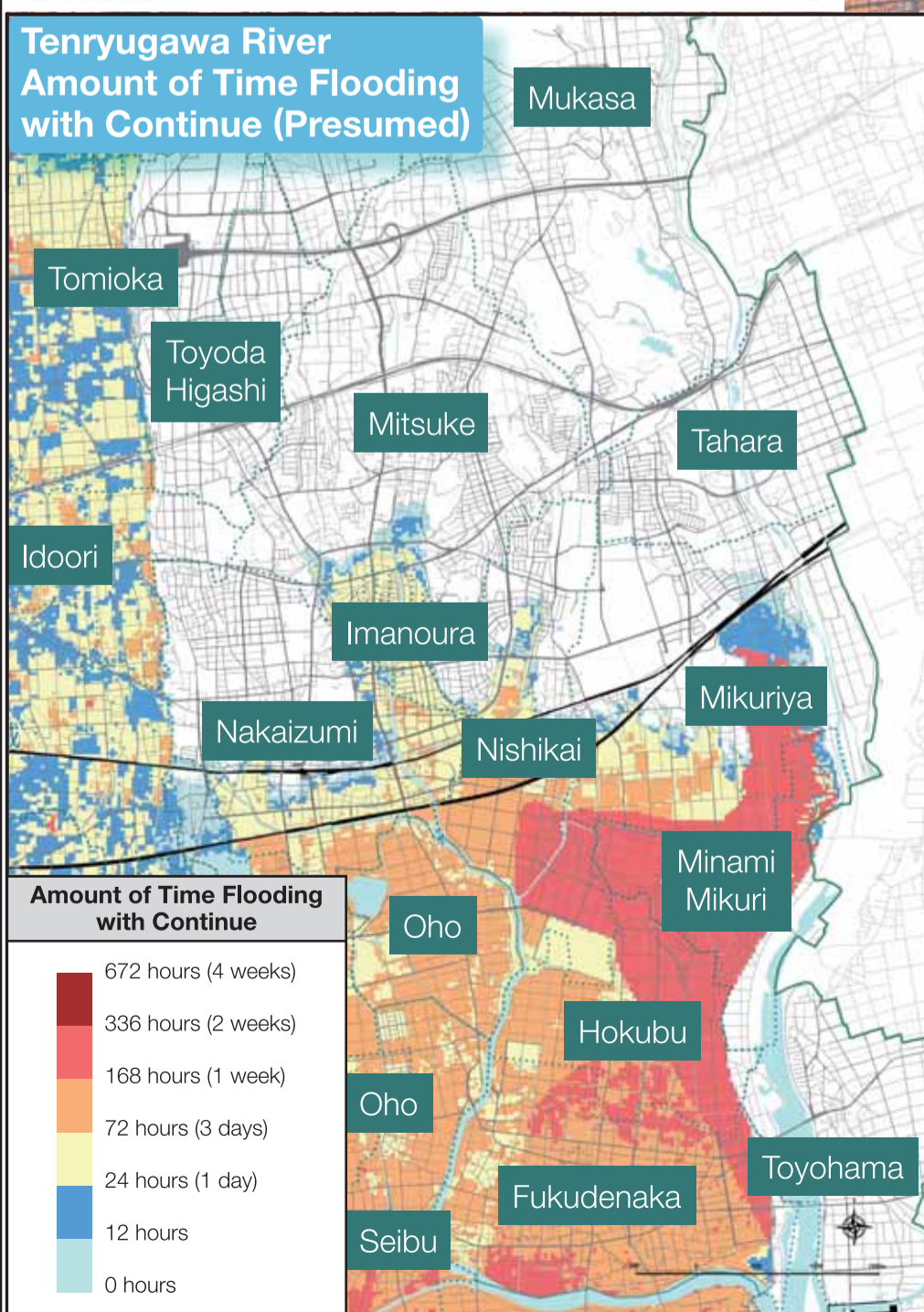
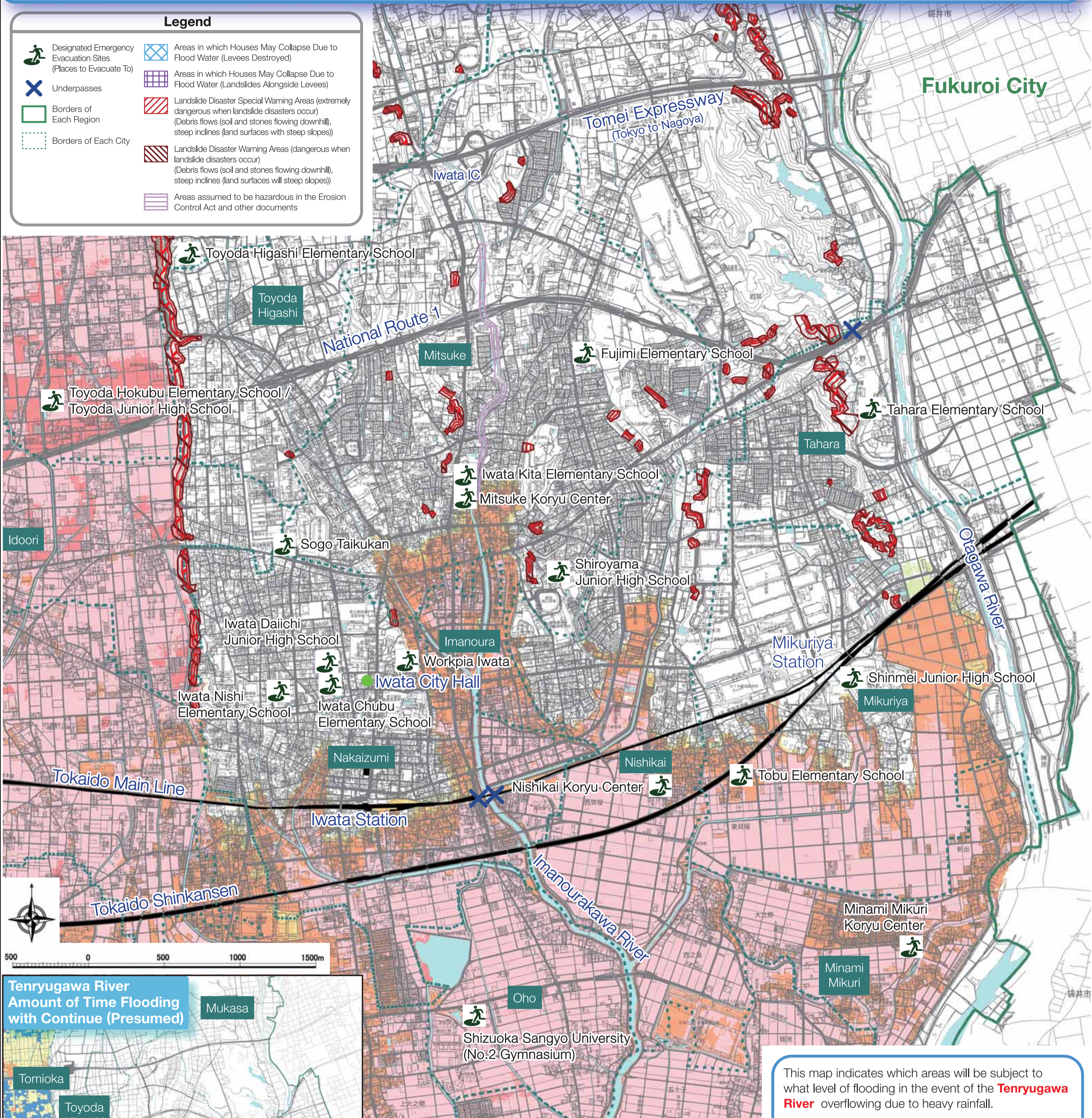


Tenryugawa River Flood Hazard Map

Iwata District Central

Legend

-  Designated Emergency Evacuation Sites (Places to Evacuate To)
-  Underpasses
-  Borders of Each Region
-  Borders of Each City
-  Areas in which Houses May Collapse Due to Flood Water (Levees Destroyed)
-  Areas in which Houses May Collapse Due to Flood Water (Landslides Alongside Levees)
-  Landslide Disaster Special Warning Areas (extremely dangerous when landslide disasters occur) (Debris flows (soil and stones flowing downhill), steep inclines (land surfaces with steep slopes))
-  Landslide Disaster Warning Areas (dangerous when landslide disasters occur) (Debris flows (soil and stones flowing downhill), steep inclines (land surfaces with steep slopes))
-  Areas assumed to be hazardous in the Erosion Control Act and other documents



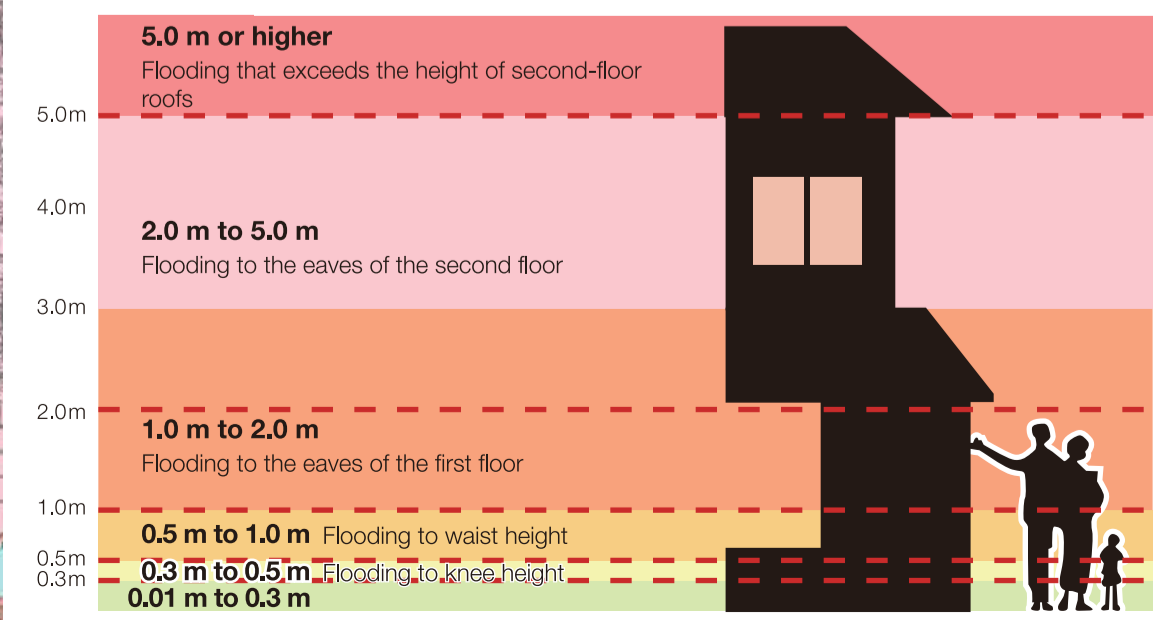
City-Designated Evacuation Sites

Fujimi Elementary School (Fujimi-cho 4-9-5)
Tahara Elementary School (Mikano 1030-1)
Iwata Kita Elementary School (Mitsuke 2352)
Sogo Taikukan (Mitsuke 4075-1)
Shiroyama Junior High School (Mitsuke 263-3)
Workpia Iwata (Mitsuke 2989-3)
Iwata Daiichi Junior High School (Konodai 39-1)
Iwata Chubu Elementary School (Nakaizumi 1203-2)
Iwata Nishi Elementary School (Nakaizumi 2522-2)
Shinmei Junior High School (Kamada 2262-74)
Nishikai Koryu Center (Nishikaizuka 1377-5)
Tobu Elementary School (Higashikaizuka 206)
Minami Mikuri Koryu Center (Higashiaraya 613)
Shizuoka Sangyo University (Ohara 1572-1)

This map indicates which areas will be subject to what level of flooding in the event of the **Tenryugawa River** overflowing due to heavy rainfall.

Standard rainfall over 48 hours is 526mm (announced by the Ministry of Land, Infrastructure, Transport and Tourism in December 2016)

People who live in areas that are assumed to be at risk of houses collapsing and other flood damage (areas in which houses may collapse due to flood water) are requested to evacuate immediately to safe locations when evacuation information is issued.



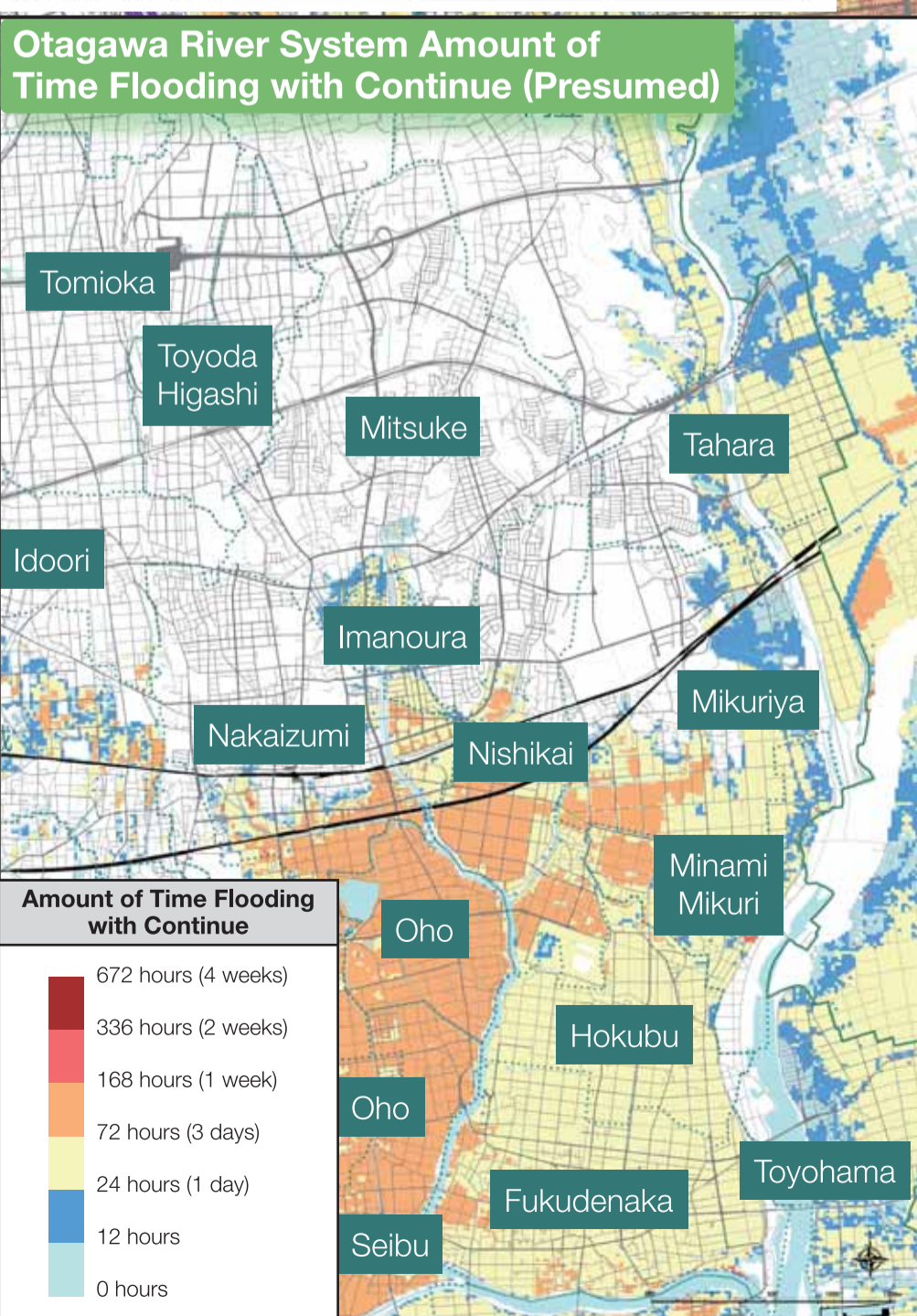
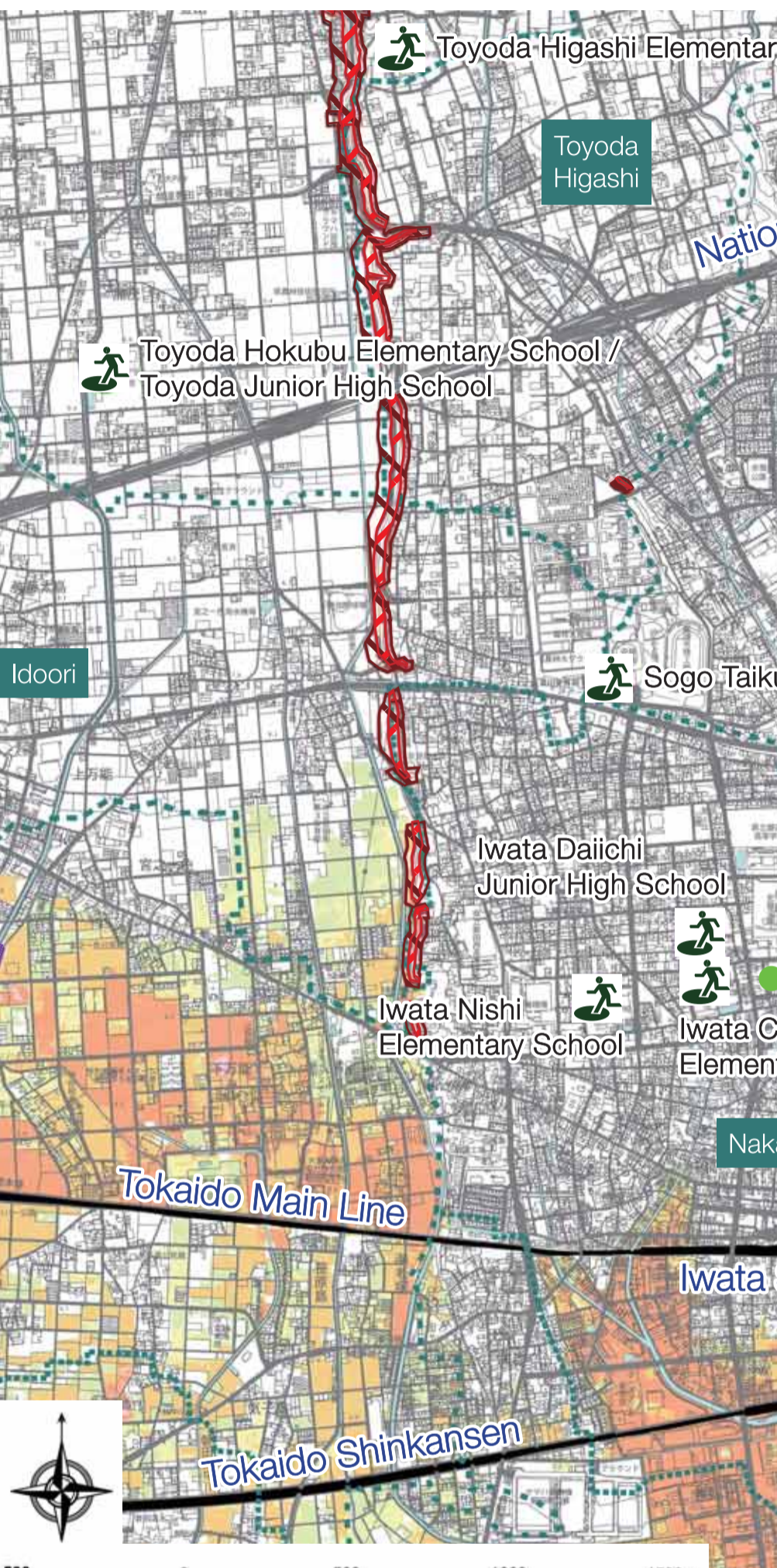
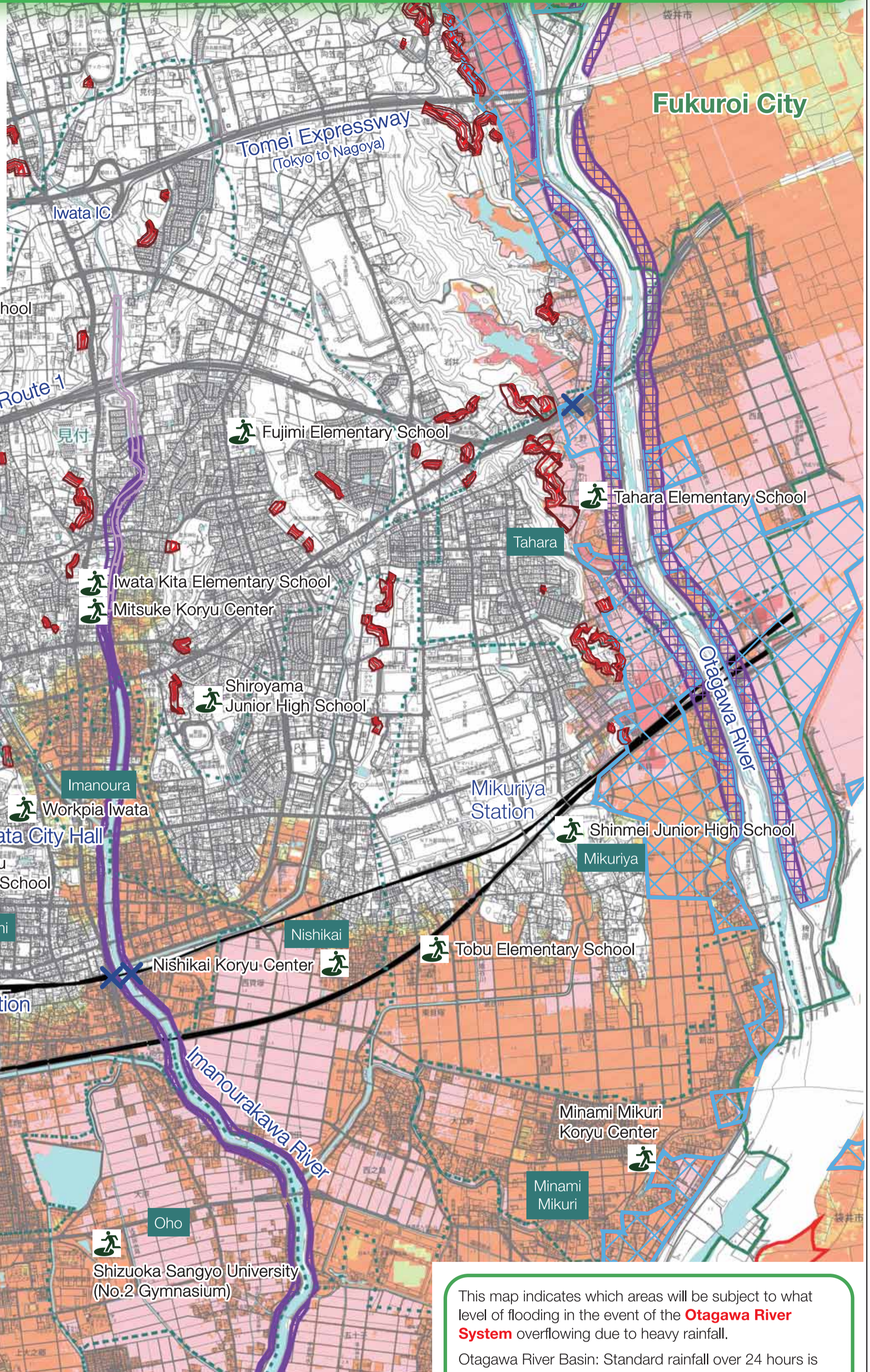
Otagawa River System Flood Hazard Map

(Otagawa River, Imanourakawa River, Bosokawa River, Haranoyagawa River, Shikijigawa River, Ugarigawa River)

Iwata District Central

Legend

- Designated Emergency Evacuation Sites (Places to Evacuate To)
- Areas in which Houses May Collapse Due to Flood Water (Levees Destroyed)
- Areas in which Houses May Collapse Due to Flood Water (Landslides Alongside Levees)
- Underpasses
- Landslide Disaster Special Warning Areas (extremely dangerous when landslide disasters occur) (Debris flows (soil and stones flowing downhill), steep inclines (land surfaces with steep slopes))
- Borders of Each Region
- Borders of Each City
- Landslide Disaster Warning Areas (dangerous when landslide disasters occur) (Debris flows (soil and stones flowing downhill), steep inclines (land surfaces with steep slopes))
- Areas assumed to be hazardous in the Erosion Control Act and other documents



City-Designated Evacuation Sites

Fujimi Elementary School (Fujimi-cho 4-9-5)
Tahara Elementary School (Mikano 1030-1)
Iwata Kita Elementary School (Mitsuke 2352)
Sogo Taikukan (Mitsuke 4075-1)
Shiroyama Junior High School (Mitsuke 263-3)
Workpia Iwata (Mitsuke 2989-3)
Iwata Daiichi Junior High School (Konodai 39-1)
Iwata Chubu Elementary School (Nakaizumi 1203-2)
Iwata Nishi Elementary School (Nakaizumi 2522-2)
Shinmei Junior High School (Kamada 2262-74)
Nishikai Koryu Center (Nishikaizuka 1377-5)
Tobu Elementary School (Higashikaizuka 206)
Minami Mikuri Koryu Center (Higashiaraya 613)
Shizuoka Sangyo University (Ohara 1572-1)

This map indicates which areas will be subject to what level of flooding in the event of the **Otagawa River System** overflowing due to heavy rainfall.

Otagawa River Basin: Standard rainfall over 24 hours is 629.5mm
 Bosokawa River Basin: Standard rainfall over 24 hours is 756mm (announced by Shizuoka Prefecture in May 2018)

People who live in areas that are assumed to be at risk of houses collapsing and other flood damage (areas in which houses may collapse due to flood water) are requested to evacuate immediately to safe locations when evacuation information is issued.

