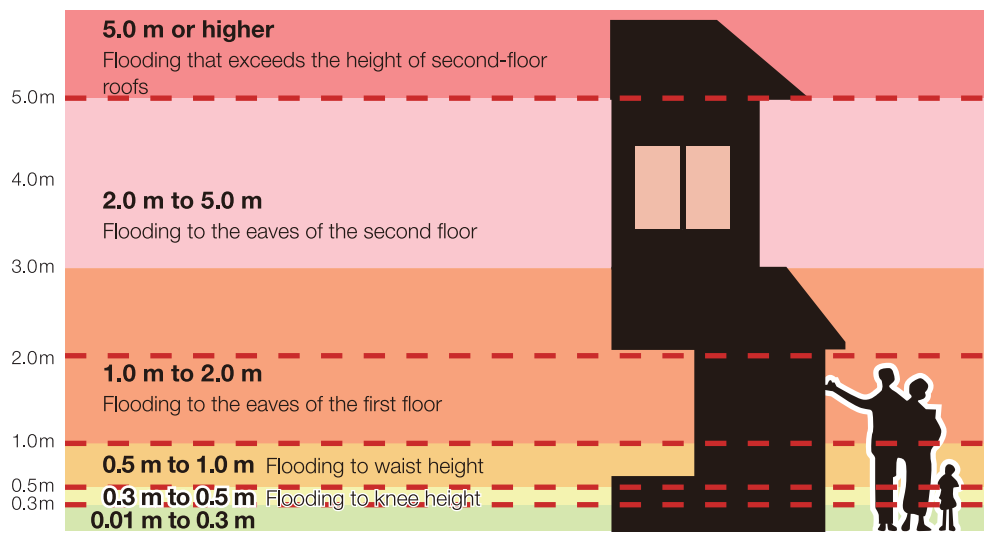
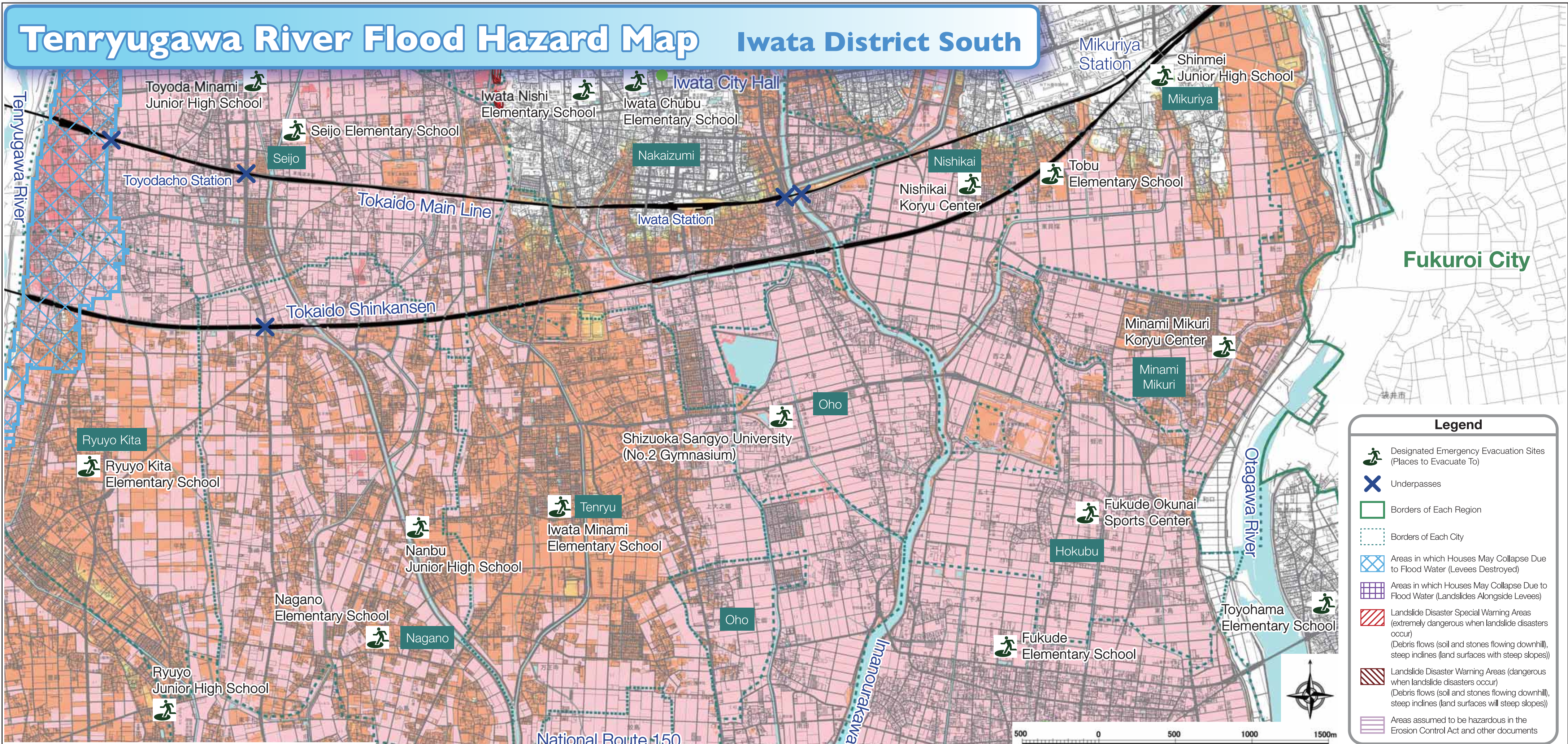


Tenryugawa River Flood Hazard Map Iwata District South

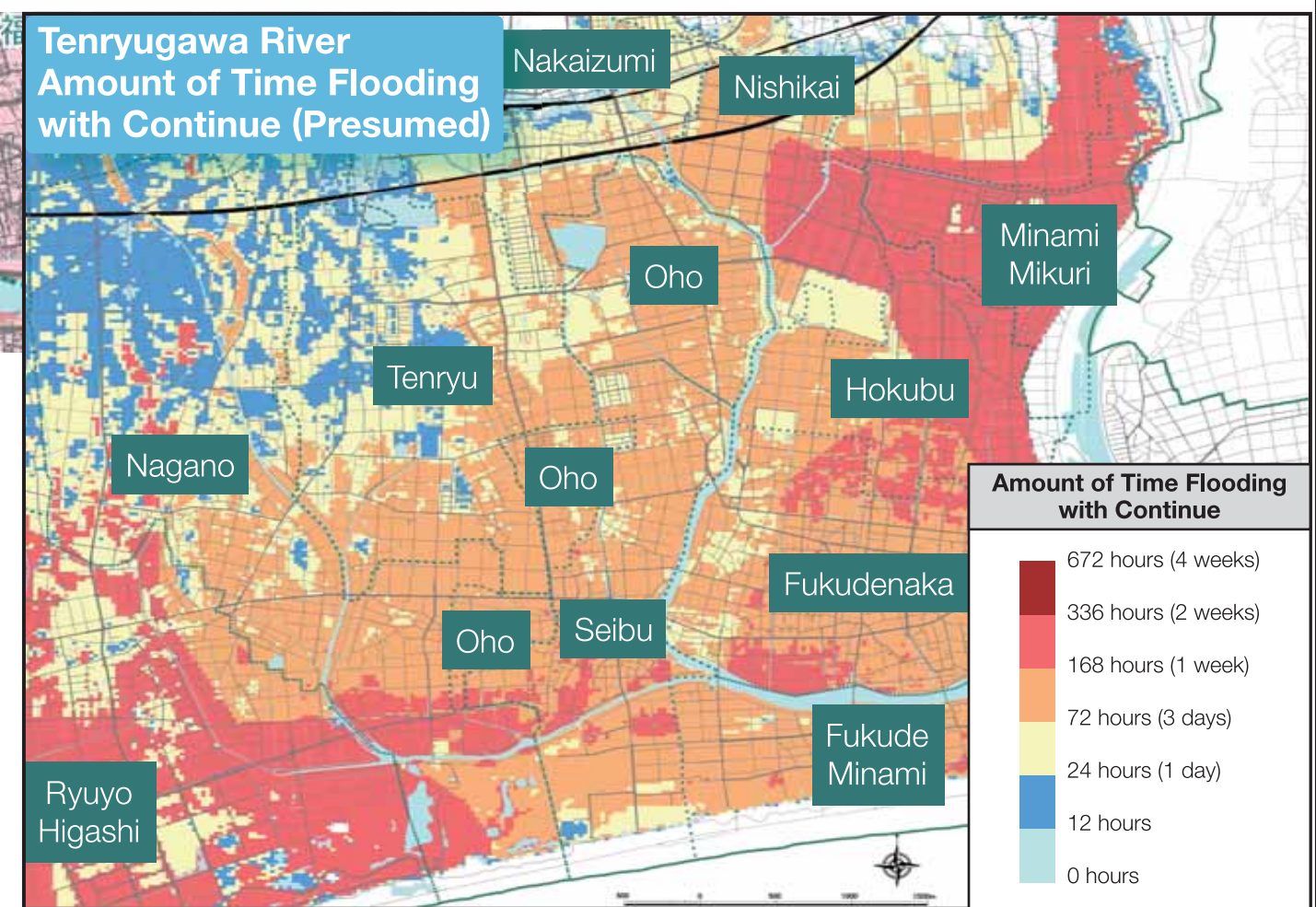


City-Designated Evacuation Sites	
Iwata Nishi Elementary School (Nakaizumi 2522-2)	Iwata Chubu Elementary School (Nakaizumi 1203-2)
Shinmei Junior High School (Kamada 2262-74)	Tobu Elementary School (Higashikaizuka 206)
Nishikai Koryu Center (Nishikaizuka 1377-5)	Minami Mikuri Koryu Center (Higashiaraya 613)
Shizuoka Sangyo University (No.2 Gymnasium) (Ohara 1572-1)	Iwata Minami Elementary School (Senzudo 1356-1)
Nanbu Junior High School (Nobako 32)	Nagano Elementary School (Kojima 736)

This map indicates which areas will be subject to what level of flooding in the event of the **Tenryugawa River** overflowing due to heavy rainfall.

Standard rainfall over 48 hours is 526mm (announced by the Ministry of Land, Infrastructure, Transport and Tourism in December 2016)

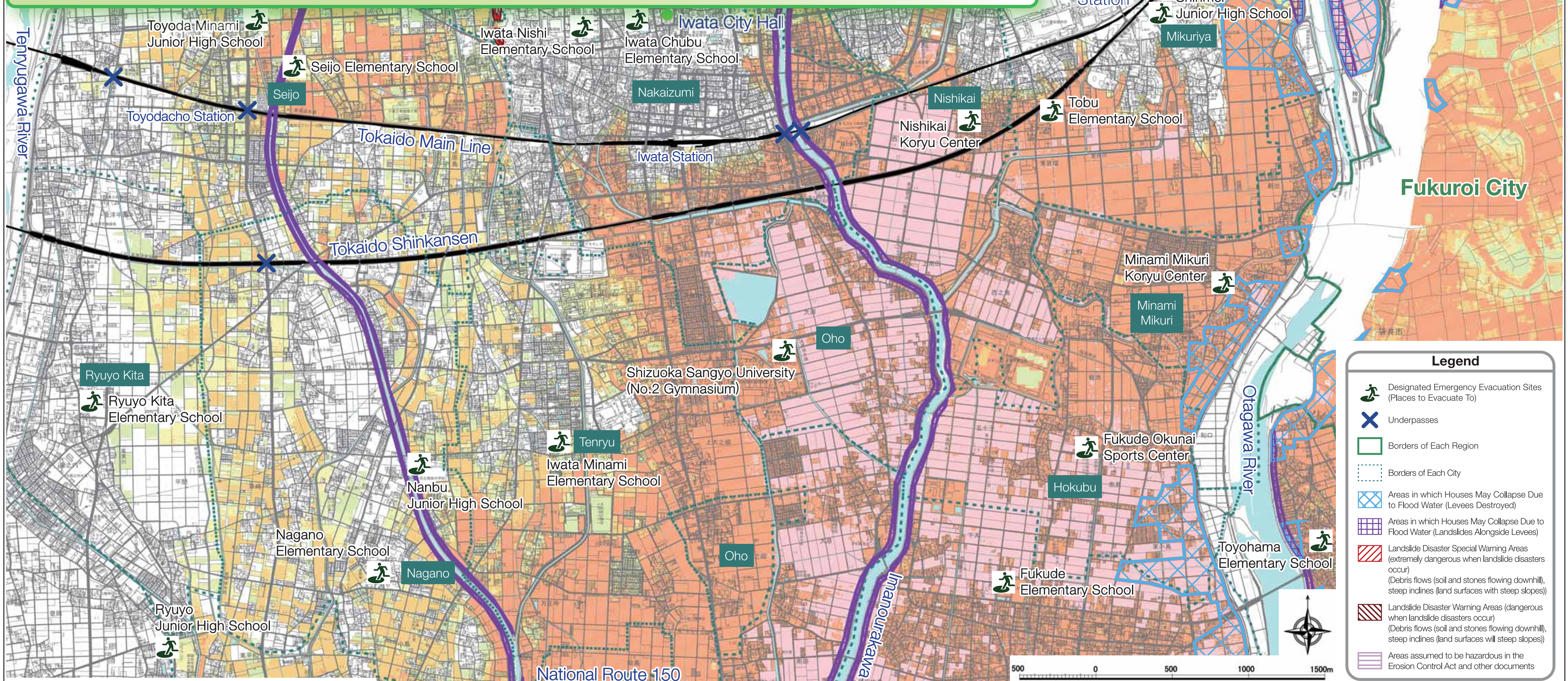
People who live in areas that are assumed to be at risk of houses collapsing and other flood damage (areas in which houses may collapse due to flood water) are requested to evacuate immediately to safe locations when evacuation information is issued.



Otagawa River System Flood Hazard Map

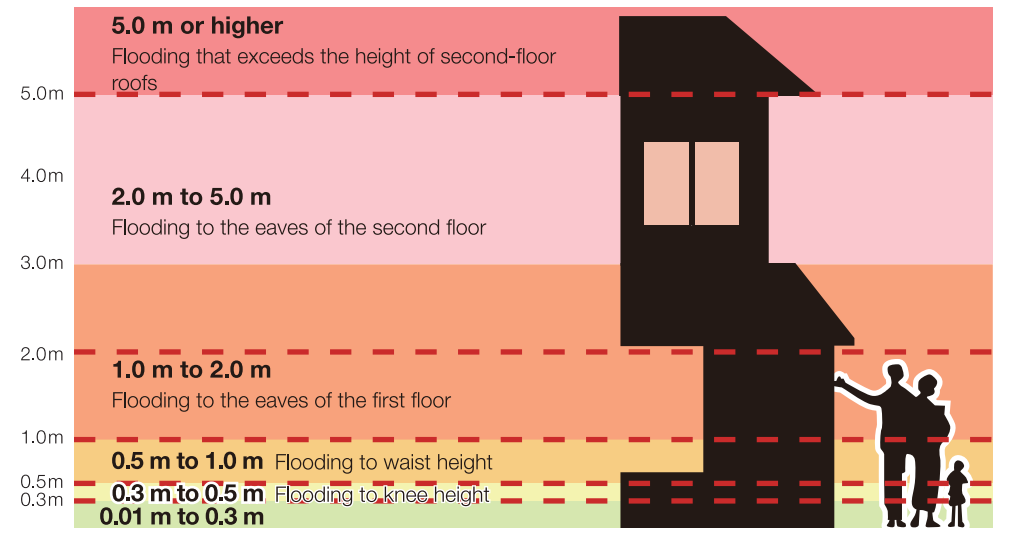
(Otagawa River, Imanourakawa River, Bosokawa River, Haranoyagawa River, Shikijigawa River, Ugarigawa River)

Iwata District South



Legend

- Designated Emergency Evacuation Sites (Places to Evacuate To)
- Underpasses
- Borders of Each Region
- Borders of Each City
- Areas in which Houses May Collapse Due to Flood Water (Levees Destroyed)
- Areas in which Houses May Collapse Due to Flood Water (Landslides Alongside Levees)
- Landslide Disaster Special Warning Areas (extremely dangerous when landslide disasters occur) (Debris flows (soil and stones flowing downhill), steep inclines (land surfaces with steep slopes))
- Landslide Disaster Warning Areas (dangerous when landslide disasters occur) (Debris flows (soil and stones flowing downhill), steep inclines (land surfaces with steep slopes))
- Areas assumed to be hazardous in the Erosion Control Act and other documents



City-Designated Evacuation Sites

Iwata Nishi Elementary School (Nakaizumi 2522-2)	Iwata Chubu Elementary School (Nakaizumi 1203-2)
Shinmei Junior High School (Kamada 2262-74)	Tobu Elementary School (Higashikaizuka 206)
Nishikai Koryu Center (Nishikaizuka 1377-5)	Minami Mikuri Koryu Center (Higashiaraya 613)
Shizuoka Sangyo University (No.2 Gymnasium) (Ohara 1572-1)	Iwata Minami Elementary School (Senzudo 1356-1)
Nanbu Junior High School (Nobako 32)	Nagano Elementary School (Kojima 736)

This map indicates which areas will be subject to what level of flooding in the event of the **Otagawa River System** overflowing due to heavy rainfall.

Otagawa River Basin: Standard rainfall over 24 hours is 629.5mm
 Bosokawa River Basin: Standard rainfall over 24 hours is 756mm (announced by Shizuoka Prefecture in May 2018)

People who live in areas that are assumed to be at risk of houses collapsing and other flood damage (areas in which houses may collapse due to flood water) are requested to evacuate immediately to safe locations when evacuation information is issued.

