

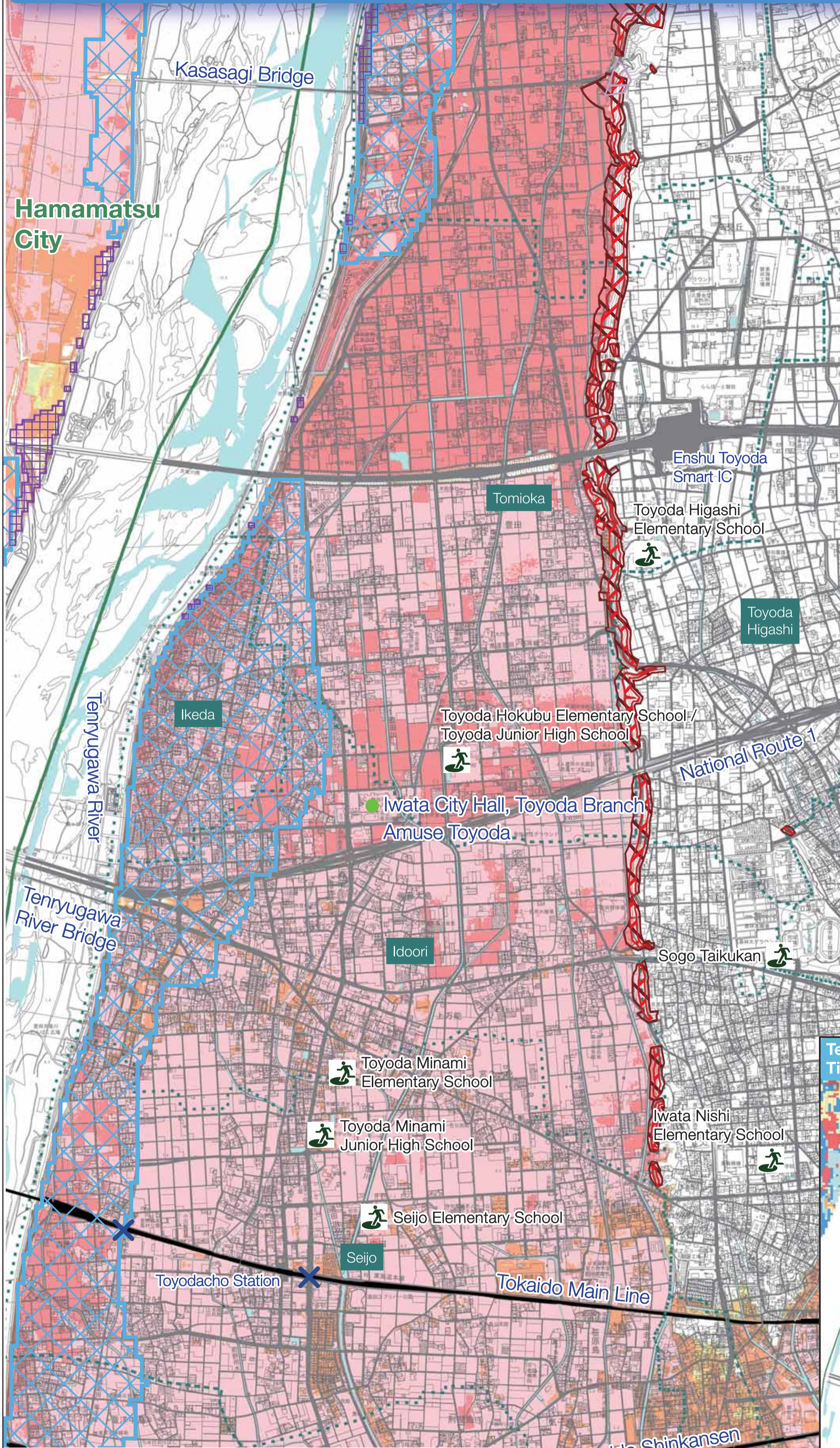
Tenryugawa River Flood Hazard Map

Toyoda District

This map indicates which areas will be subject to what level of flooding in the event of the **Tenryugawa River** overflowing due to heavy rainfall.

Standard rainfall over 48 hours is 526mm (announced by the Ministry of Land, Infrastructure, Transport and Tourism in December 2016)

People who live in areas that are assumed to be at risk of houses collapsing and other flood damage (areas in which houses may collapse due to flood water) are requested to evacuate immediately to safe locations when evacuation information is issued.

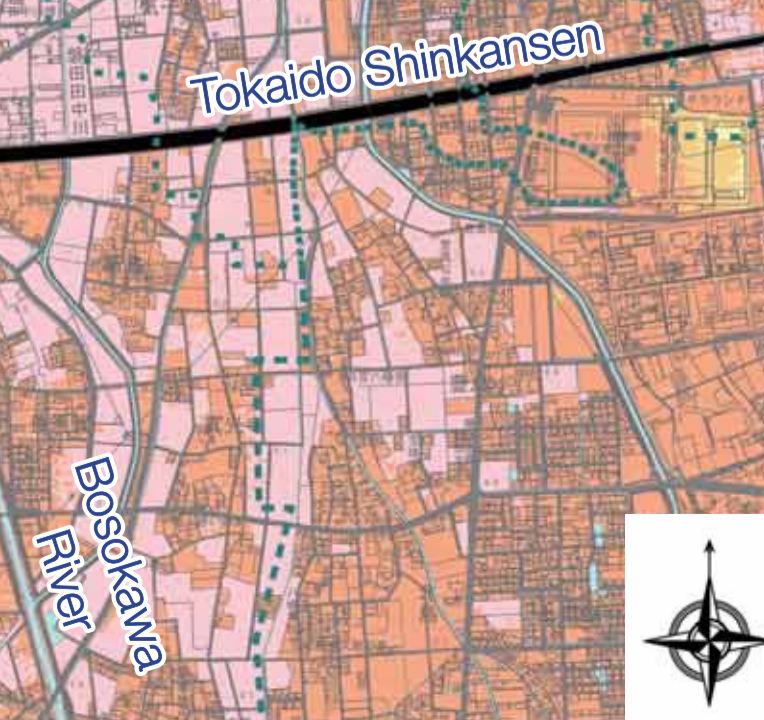
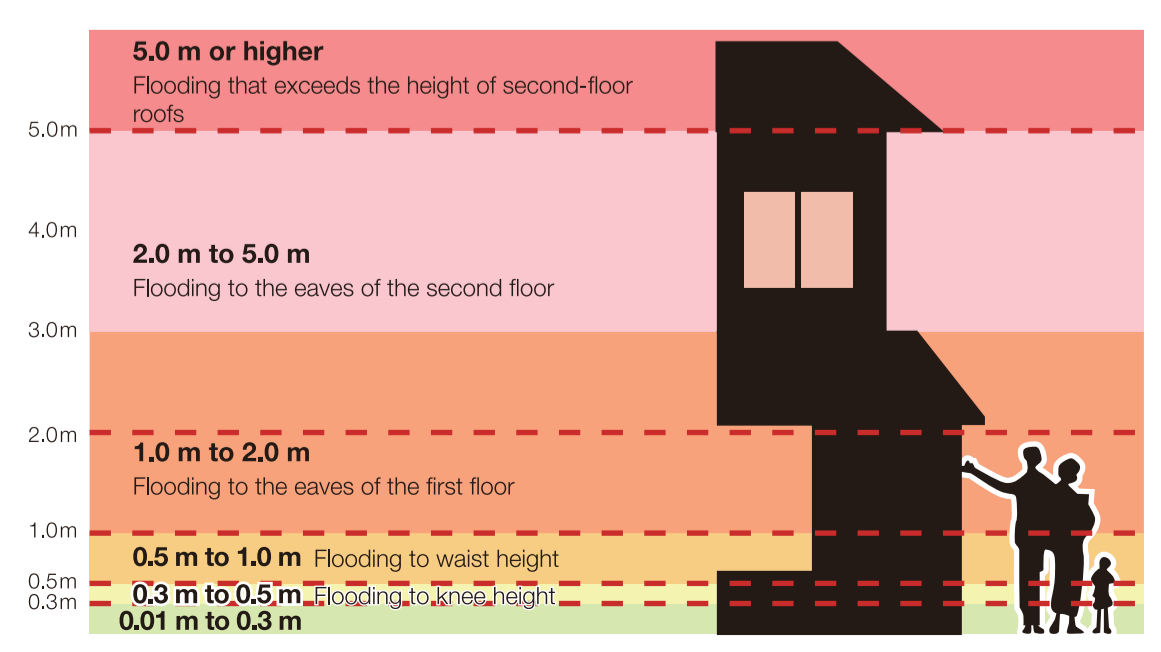
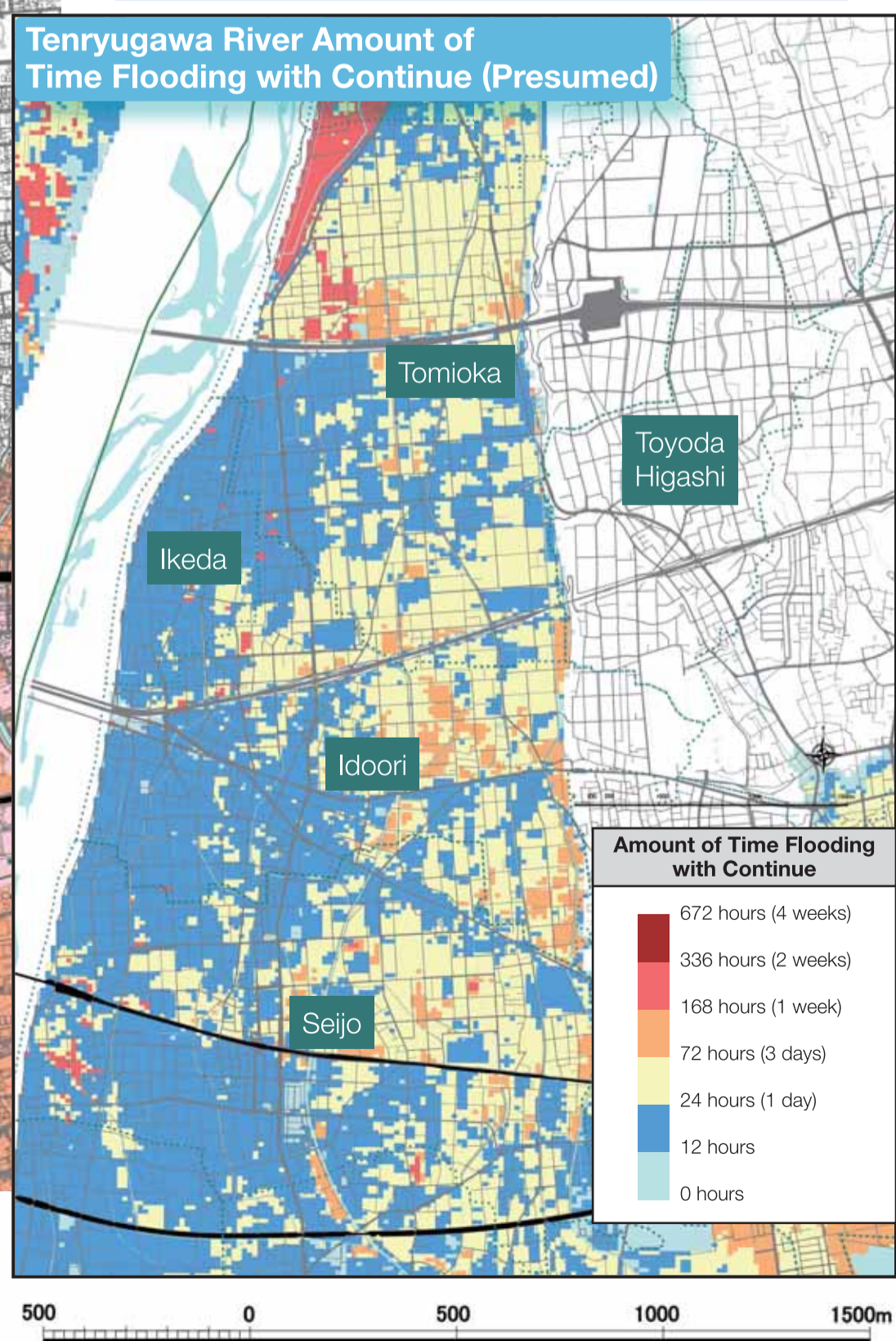


Legend

- Designated Emergency Evacuation Sites (Places to Evacuate To)
- Underpasses
- Borders of Each Region
- Borders of Each City
- Areas in which Houses May Collapse Due to Flood Water (Levees Destroyed)
- Areas in which Houses May Collapse Due to Flood Water (Landslides Alongside Levees)
- Landslide Disaster Special Warning Areas (extremely dangerous when landslide disasters occur) (Debris flows (soil and stones flowing downhill), steep inclines (land surfaces with steep slopes))
- Landslide Disaster Warning Areas (dangerous when landslide disasters occur) (Debris flows (soil and stones flowing downhill), steep inclines (land surfaces will steep slopes))
- Areas assumed to be hazardous in the Erosion Control Act and other documents

City-Designated Evacuation Sites (Toyoda District)

Toyoda Higashi Elementary School (Takamioka 57)
Toyoda Hokubu Elementary School / Toyoda Junior High School (Kamo 243)
Toyoda Minami Junior High School (Tateno 200)
Toyoda Minami Elementary School (Morishita 300)
Seijo Elementary School (Nakata 55)



Otagawa River System Flood Hazard Map

(Otagawa River, Imanourakawa River, Bosokawa River, Haranoyagawa River, Shikijigawa River, Ugarigawa River)

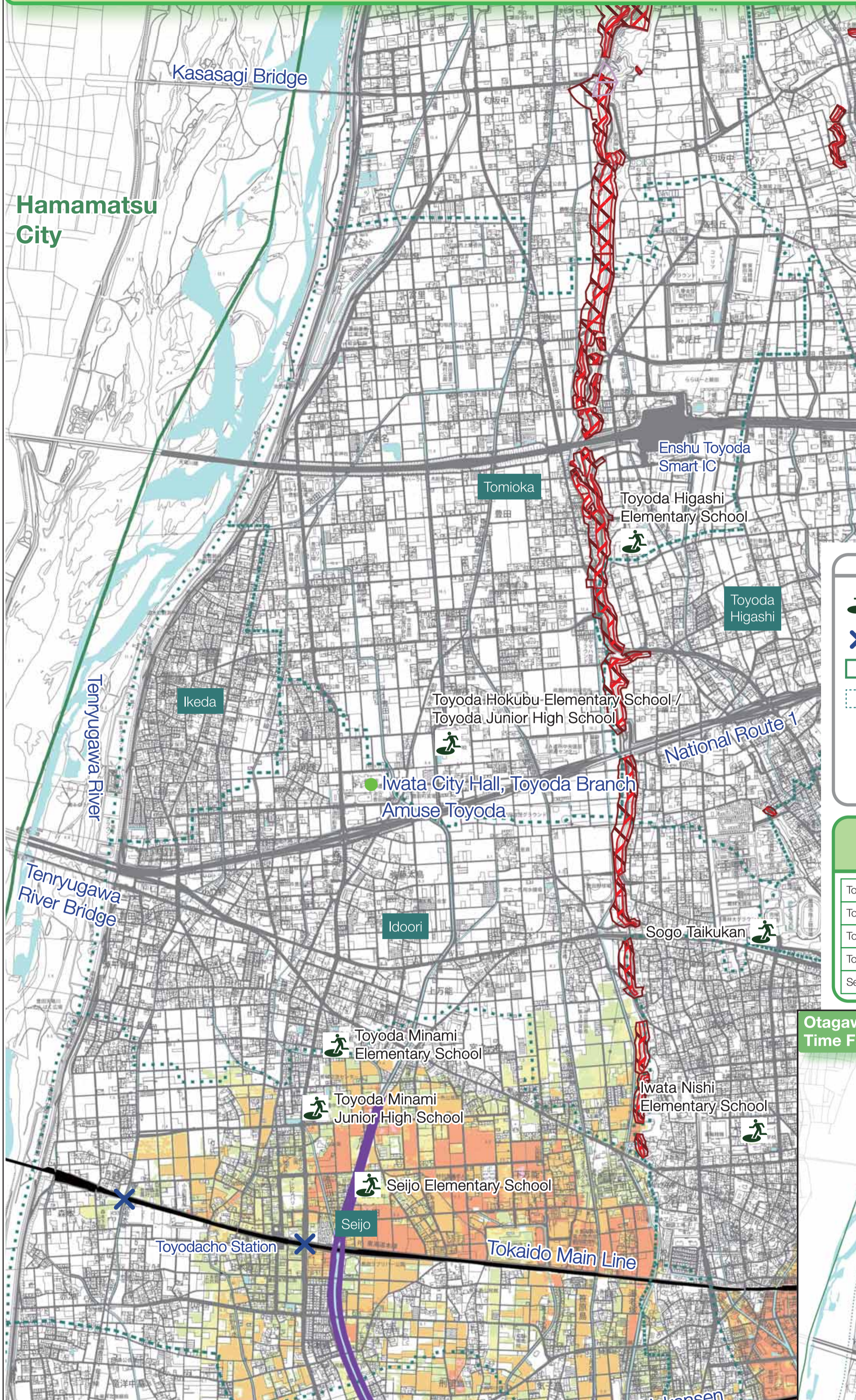
Toyoda District

This map indicates which areas will be subject to what level of flooding in the event of the **Otagawa River System** overflowing due to heavy rainfall.

Otagawa River Basin: Standard rainfall over 24 hours is 629.5mm

Bosokawa River Basin: Standard rainfall over 24 hours is 756mm (announced by Shizuoka Prefecture in May 2018)

People who live in areas that are assumed to be at risk of houses collapsing and other flood damage (areas in which houses may collapse due to flood water) are requested to evacuate immediately to safe locations when evacuation information is issued.



Legend

- Designated Emergency Evacuation Sites (Places to Evacuate To)
- Underpasses
- Borders of Each Region
- Borders of Each City
- Areas in which Houses May Collapse Due to Flood Water (Levees Destroyed)
- Areas in which Houses May Collapse Due to Flood Water (Landslides Alongside Levees)
- Landslide Disaster Special Warning Areas (extremely dangerous when landslide disasters occur) (Debris flows (soil and stones flowing downhill), steep inclines (land surfaces with steep slopes))
- Landslide Disaster Warning Areas (dangerous when landslide disasters occur) (Debris flows (soil and stones flowing downhill), steep inclines (land surfaces will steep slopes))
- Areas assumed to be hazardous in the Erosion Control Act and other documents

City-Designated Evacuation Sites (Toyoda District)

Toyoda Higashi Elementary School (Takamioka 57)
Toyoda Hokubu Elementary School / Toyoda Junior High School (Kamo 243)
Toyoda Minami Junior High School (Tateno 200)
Toyoda Minami Elementary School (Morishita 300)
Seijo Elementary School (Nakata 55)

