

Flood Hazard Map

(Worst-case Scenarios)

This hazard map points out the hazardous areas when rivers overflow during heavy rainfall. You are requested to discuss evacuation areas and evacuation methods with your family and neighbors before disaster strikes.



Disaster Prevention Information for Your Home

Family Evacuation Areas

1

2

Status of Your Home

How high will flood water rise? _____ m

How many hours will be flooding continue? _____ hours

How to use the Hazard Map

1

Check the location of your own home on the map.



2

The areas colored in are the hazardous areas.



3

Consider places to evacuate to when rivers overflow during typhoons and heavy rainfall.



4

Consider how to get to safe locations.



5

Work out the best route of escape, and mark them on the map.



Created: March 2023, Inquiries: Iwata City Risk Management Section, 0538-37-2116

Storm and Flood Damage

Notifications from the Meteorological Agency

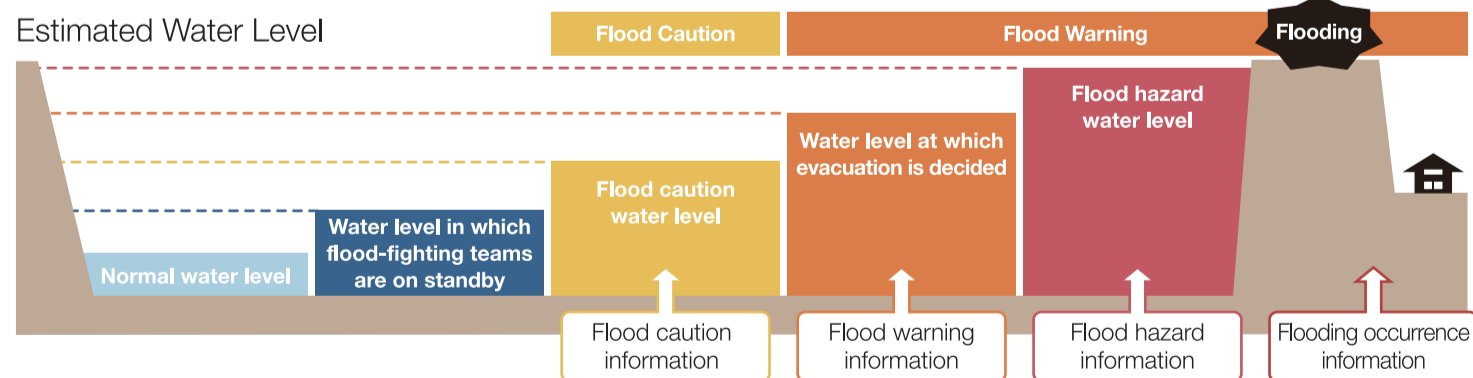
Notifications will be issued for [Cautions] and [Warnings] if heavy rainfall and flooding appear imminent. [Special Warnings] will be issued if torrential rain or a severe disaster appear imminent.



Heavy Rain and Flood Caution	Heavy Rain and Flood Warning	Landslide Alert Information	Special Torrential Rain Warning	Record-Breaking Short-Term Heavy Rain Information
Issued when there is a chance of heavy rainfall and flooding occurring, which may result in a natural disaster	Issued when there is a chance of heavy rainfall and flooding occurring, which may result in a large natural disaster	Issued when the chances of landslides occurring increases	Issued when there is a chance of rainfall at a level that occurs only once in a dozen or more years occurring	Issued after heavy rainfall within a short period of time has occurred

River Water Levels

Flooding forecasts are issued when there is a chance of rivers overflowing.



Types of Landslide Disasters

Keep an eye on all slopes and inclined areas of land near your home during heavy rainfall. If you sense danger, evacuate immediately.

Debris Flows

Rocks and sand from mountains and rivers flowing with water when rain continues for long periods of time, or during intense, heavy rainfall.

[Preluded By] Earth crumbling nearby rivers. River water becomes cloudy.



Slope Failures

Slopes and inclines suddenly breaking away and sliding downward due to the water that has accumulated within the surface of the soil.

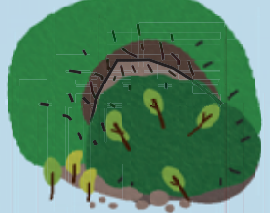
[Preluded By] Cracks appear in slopes and inclines. Small stones tumble down the surface of inclines.



Landslides

The surfaces of slopes and inclines gradually shifting together with underground water.

[Preluded By] Cracks in the surface, and the creation of step-like level differences.



Tenryugawa River Hazard Map

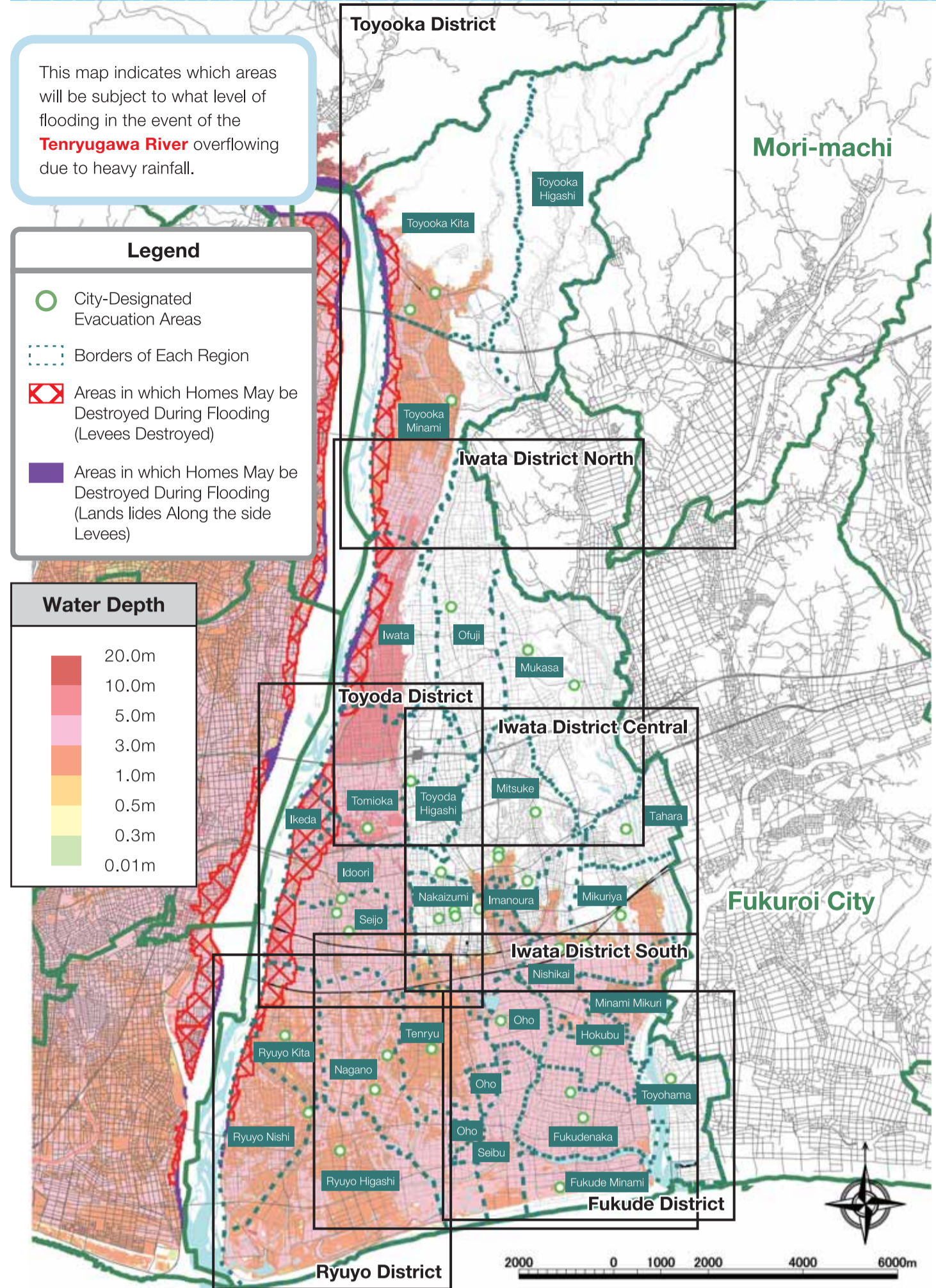
This map indicates which areas will be subject to what level of flooding in the event of the Tenryugawa River overflowing due to heavy rainfall.

Legend

- City-Designated Evacuation Areas
- Borders of Each Region
- Areas in which Homes May be Destroyed During Flooding (Levees Destroyed)
- Areas in which Homes May be Destroyed During Flooding (Landslides Along the side Levees)

Water Depth

- 20.0m
- 10.0m
- 5.0m
- 3.0m
- 1.0m
- 0.5m
- 0.3m
- 0.01m



Obtaining Disaster-Prevention Information and Evacuation Information

Obtaining Disaster-Prevention Information

It is possible to check for information on the TV, radio or Internet.

E-mail

e-mail

Register to receive Iwata Hotto Mail



Internet

Iwata City Disaster Prevention Links

https://www.city.iwata.shizuoka.jp/bousai_anzen/1001210.html

[Shizuoka Disaster Prevention] general disaster-prevention application

<https://www.pref.shizuoka.jp/bousai/application.html>

Television

Use data broadcasting



SIPOS-RADAR

Details on precipitation levels and river water levels, etc.

<http://sipos.pref.shizuoka.jp/>

Meteorological Agency

Weather forecast, and caution and warning notifications, etc.

<http://www.jma.go.jp/jma/index.html>

Evacuation Information

The city will issue evacuation information if a natural disaster appears imminent.



Types of Evacuation Information

Warning Level	Action to Take	Evacuation Information
Warning Level 5 Flooding has occurred	A natural disaster has occurred. This is a life-threatening situation. Do everything to protect your safety.	Emergency safety measures (issued by Iwata City)
Warning Level 4 Reached a flood hazard water level	Evacuate immediately from the hazardous area.	Evacuation orders (issued by Iwata City)
Warning Level 3 Reached a water level at which evacuation is decided	The elderly and other people who require time to evacuate are to begin evacuating. Other people are to begin evacuation preparations.	Evacuation of the elderly, etc. (issued by Iwata City)
Warning Level 2 Reached a flood caution water level	Use the hazard map to check the areas at risk of disaster, the evacuation areas and the routes to them.	Heavy rain cautions, flood cautions (issued by the Meteorological Agency)
Warning Level 1 Reaches a water level in which flood-fighting teams are on standby	Check the weather forecast to see whether or not the risk of disaster is imminent, and check your own evacuation preparations in the event of a disaster occurring.	Early warning information on extreme weather (issued by the Meteorological Agency)