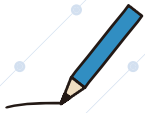


# Flood Hazard Map

(Worst-case Scenarios)



This hazard map points out the hazardous areas when rivers overflow during heavy rainfall. You are requested to discuss evacuation areas and evacuation methods with your family and neighbors before disaster strikes.



## Disaster Prevention Information for Your Home

### Family Evacuation Areas

1

2

### Status of Your Home

How high will flood water rise? \_\_\_\_\_ m

How many hours will be flooding continue? \_\_\_\_\_ hours



## How to use the Hazard Map

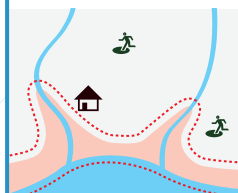
1

Check the location of your own home on the map.



2

The areas colored in are the hazardous areas.



3

Consider places to evacuate to when rivers overflow during typhoons and heavy rainfall.



4

Consider how to get to safe locations.



5

Work out the best route of escape, and mark them on the map.

